

Montgomery  
Hospice  
Bereavement  
Care





*Montgomery Hospice Bereavement Care counselors helped me through a difficult time. They listened and helped me find my own way. I cherish my memories of my husband but am also learning how to adjust to my new life.*

**wife of a hospice patient**

Grief is a natural reaction to loss, and one that each of us experiences differently. If you have suffered the loss of a family member or friend and are seeking grief support, Montgomery Hospice Bereavement Care counselors are available to listen and help. Our services are available to all Montgomery County residents, even if your loved one was not a hospice patient. We offer a variety of programs for all ages.



## ***Care for You as You Grieve***

The Montgomery Hospice Bereavement Care program supports individuals and families throughout the community. We offer care in ways that fit each person's values, beliefs and culture. Our counselors can help you understand and work through your feelings by:

- providing general information about grief and loss**
- answering questions and helping you find your own answers**
- listening to your stories with all the mixed emotions**
- being a caring and reassuring presence**

We can help you and your family at any stage in your grief, and can provide referrals to other professionals as needed.

## ***Care for Hospice Families***

The families of Montgomery Hospice patients may receive our bereavement support throughout the year following the death of their loved one, as part of our comprehensive hospice care. This is provided through support groups, workshops, visits, phone calls and regular mailings of self-help materials.





## ***Our Commitment to Bereavement Care***

Montgomery Hospice is rare among local organizations for having at least one experienced, professional counselor as a co-facilitator in each group session or workshop. Our bereavement team is made up of professionals and highly-trained volunteers who are supervised by professional counselors.

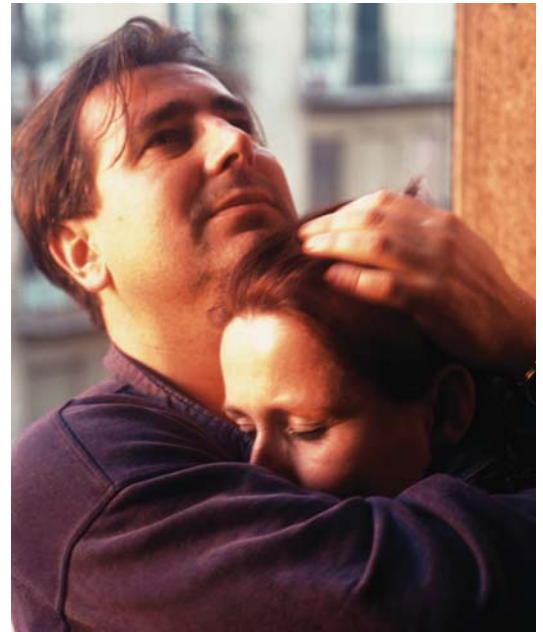
## ***Care for the Entire Community***

Our mission includes providing grief support and education to all of Montgomery County, including:

- anyone who has suffered the loss of a loved one**
- professional caregivers in nursing homes and other facilities where staff are mourning patients who have died**
- businesses helping employees cope with the death of a co-worker**
- schools helping children and teens understand and manage loss**
- faith communities supporting their grieving members**

Some of our regular workshops and discussion groups are:

- six-week grief support groups for all ages, including sessions for children, teens and parents**
- holiday discussion groups to help you balance sorrow and celebration**
- topical workshops, such as learning to cook for one or journaling as a way to heal**
- workplace sessions that give time and space for co-workers to honor memories of colleagues**



## ***Contact Us***

Whether or not your loved one was cared for as a patient with Montgomery Hospice, our Bereavement Care counselors can help. To learn more about all of our programs and how we can comfort and support you, go to [www.montgomeryhospice.org](http://www.montgomeryhospice.org) or call 301 921 4400 and ask for a bereavement counselor. Counselors are available weekdays from 9:00 a.m. to 5:00 p.m.

*to gentle the journey through serious illness and  
loss with skill and compassion*

## **Montgomery Hospice Mission**

---

Montgomery Hospice is a nonprofit, medical hospice that has served patients at the end of life and their loved ones since 1981. We offer services throughout Montgomery County, but are independent of the county and state government.

We care for patients at the end of life regardless of their ability to pay. Our work is funded by generous gifts from local residents, businesses and civic groups, as well as by Medicare, Medicaid and private insurance.

Montgomery Hospice Foundation raises and manages the funds that make the work of Montgomery Hospice possible.

Every year, seriously ill and grieving people throughout Montgomery County find comfort through our *Hospice at Home* service, *Casey House* inpatient facility, and our *Bereavement Care* program.

Joint Commission  
on Accreditation of  
Healthcare Organizations

Medicare and Medicaid certified

Montgomery Hospice  
1355 Piccard Drive, Suite 100  
Rockville MD 20850

phone 301 921 4400  
fax 301 921 4433

[www.montgomeryhospice.org](http://www.montgomeryhospice.org)

Montgomery  
Hospice